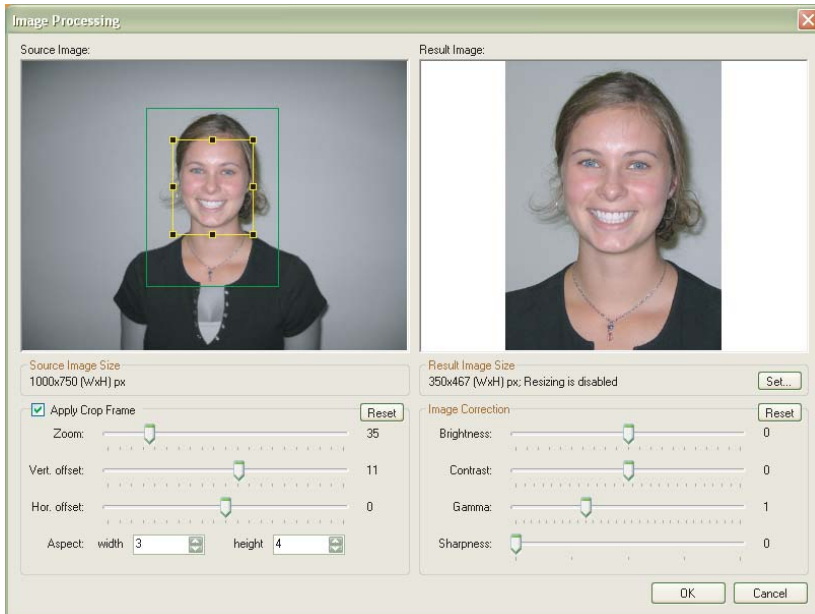




12142 NE Sky Lane, Suite 130
 Auora, OR 97002
 Telephone: 888-843-3643
 Fax: 503-682-0166
 Email: sales@ttsys.com
 www.ttsys.com



TransCam Photo Badging Solution



Finally, a great low-cost digital camera solution made especially for ID badging applications. The TransCam Digital ID Camera Solution combines the superior image quality of a high resolution digital camera with a live video capture software interface that makes capturing images for ID badging applications faster and easier than ever.

The TransCam DC's non-proprietary USB interface will work with any TWAIN-compliant ID badging application. The system provides on screen controls for most of the major camera functions, including zoom, flash, exposure, white balance, and more!

We now also have the TransCam AC (Auto Crop). This package has all the same features of the TransCam DC, but has an added feature which detects the location of the subject's face, and automatically positions and sizes a crop box over the face, saving the time and effort it takes to crop each photo individually. This is especially useful in applications where large numbers of people must be processed quickly.



TransCam WDM Badging Solution

TransCam WDM is designed for ID photography. The software provides full control of all standard web cameras. TransCam WDM also provides automatic face detection, face crop, image resizing and enhancement. Camera includes standard tripod mount. Available bundle options include backdrop and tripod. TransCam will activate offline, however an internet connection is temporarily needed when installing LifeCam drivers.

- Camera settings control
- Live image preview
- Face detection
- Face crop
- ID photo enhancement
- ID photo export
- Save to file
- Still photo quality: 8M
- Wide angle lens
- Auto focus: stay in focus at any distance
- Tripod Thread: ready to be mounted on a standard tripod

**Contact your TransTech Sales Rep
 for bundle details and pricing at
 888-843-3643 or sales@ttsys.com**

Windows ME, 2000, XP, Vista
 Windows 7 (incl. 64bit)