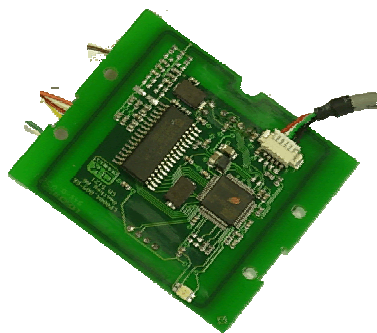


Targetted markets

- Security,
- Education,
- Access Control,
- PKI,
- e-Payment
- Multi-application smart cards



Available on:

- ☒ Pebble
- ☒ Dualys
- ☒ Securion
- ☐ Tattoo
- ☐ Tattoo Rewrite
- ☐ Quantum

Software Development Kit:

- ☐ Included
- ☒ Not included

Computer connection:

- ☐ RS232
- ☒ USB port

Omnikey CardMan®

Dual smart contact & contactless cards encoding unit

The CardMan 5121 is a dual interface PC-linked reader that will read/write to both a 13.56 MHz RFID contactless smart card and virtually any contact smart card. The dual interface feature economically supports end-user environments where both contactless and contact smart card technology may be in use.

The CardMan 5121 is based on a 13.56 MHz contactless smart card RFID interface that is compliant with ISO specifications 14443 A and B and 15693.

The reader works with a variety of 13.56 MHz contactless smart cards including, but not limited to:

- Philips: MIFARE®, DESFire®, MIFARE ProX®, and i.code
- HID: iCLASS®
- Texas Instruments: TagIT®
- ST Micro: x-ident, SR 176, SR 1X 4K
- Infineon: My-d (in secure mode UID only)
- Atmel: AT088RF020
- KSW MicroTech: KSW TempSens

OMNIKEY's contact smart card reader with USB interface, complies with major standards such as ISO 7816, PC/SC, Microsoft WHQL, and EMV 2000 Level 1 specifications is guaranteed.



TransTech Systems, Inc.
Toll Free: 1-888-VIDEO-ID
Phone: 503-682-3292
Fax: 503-682-0166
Wilsonville, OR 97070
www.ttsys.com

This datasheet aims at providing details regarding the above-mentioned item integrated into an Evolis printer. Data included in this document should be confirmed by Evolis prior to any final commitment.

Data source: OMNIKEY brochure-2005. Information subject to change without notice. The CardMan name is a registered trademark of OMNIKEY. All other trademarks are the property of their respective owners. www.omnikey.com

evolis

Feature set

Host interface

USB 2.0 CCID1 (also supports 1.1)
Transmission speed : 12 Mbps
Power supply : Bus powered

Contact Smart Card Interface

Compliant with ISO 7816 and EMV 2000 Level 1
Supports T=0, T=1
Supports 2-wire: SLE 4432/42 (S=10)
3-wire: SLE4418/28 (S=9)
Supports I2C (S=8)
Supports SLE 4404
Automatic detection of smart card type

Contactless (RFID) Smart Card Interface

ISO 14443 A
ISO 14443 B
ISO 15693
ISO 7816

Supported Tags

Philips: MIFARE®, DESFire®, MIFARE ProX®, and i.code
HID: *iCLASS*®
Texas Instruments: TagIT®
ST Micro: x-ident, SR 176, SR 1X 4K
Infineon: My-d (in secure mode UID only)
Atmel: AT088RF020
KSW MicroTech: KSW TempSens

Compliance

Microsoft® WHQL3 certified
EMV 2000 Level 1 certified
ISO 7816
HBCI4
USB 1.1 and 2.0
CCID (contact interface only)

API

PC/SC driver
CT-API (on top of PC/SC - for contact interface)
OCF (on top of PC/SC - for contact interface)
Synchronous API (on top of PC/SC - for contactless interface)

Computer interface

Pebble, Dualys:
USB – Dedicated connector
Securion:
USB through the printer's USB connector and an USB internal HUB

PC/SC Driver Support

Windows® 2000, Windows® XP



TransTech Systems, Inc.
Toll Free: 1-888-VIDEO-ID
Phone: 503-682-3292
Fax: 503-682-0166
Wilsonville, OR 97070
www.ttsys.com

This datasheet aims at providing details regarding the above-mentioned item integrated into an Evolis printer. Data included in this document should be confirmed by Evolis prior to any final commitment.

Data source: OMNIKEY brochure-2005. Information subject to change without notice. The CardMan name is a registered trademark of OMNIKEY. All other trademarks are the property of their respective owners. www.omnikey.com

